



Electrical Installation Information Guide

All electrical installation must be preformed by a certified electrician and conform to local, state and federal regulations and codes.

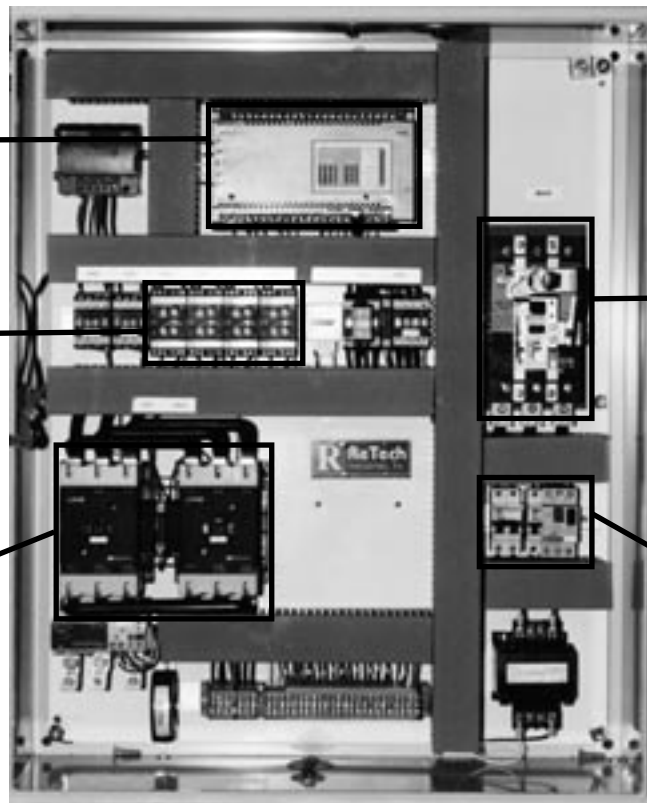
A wiring diagram and the maintenance and operating manual are located in the pocket inside the control panel. Please remove and review carefully prior to your electrical installation.

Vecoplan customers are responsible for the installation of all field wiring for the control panel and from the machine to the control panel. This will specifically consist of some of the information listed in the following pages.

Additional inputs/outputs
for interlock with
auxiliary equipment

Adjustable amp load
detectors eliminate the
need for programming/
E-prom changes

Bus bars on main
contactors totally
enclosed



Easy main feed
termination

Circuit breakers
instead of fuses for
control circuits/hydraulics



Machine Startup Information Guide

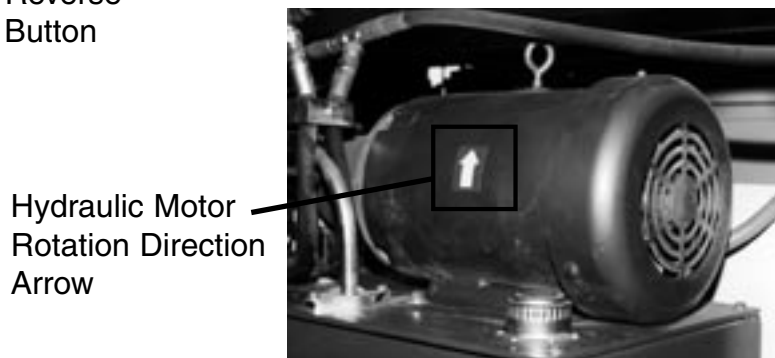
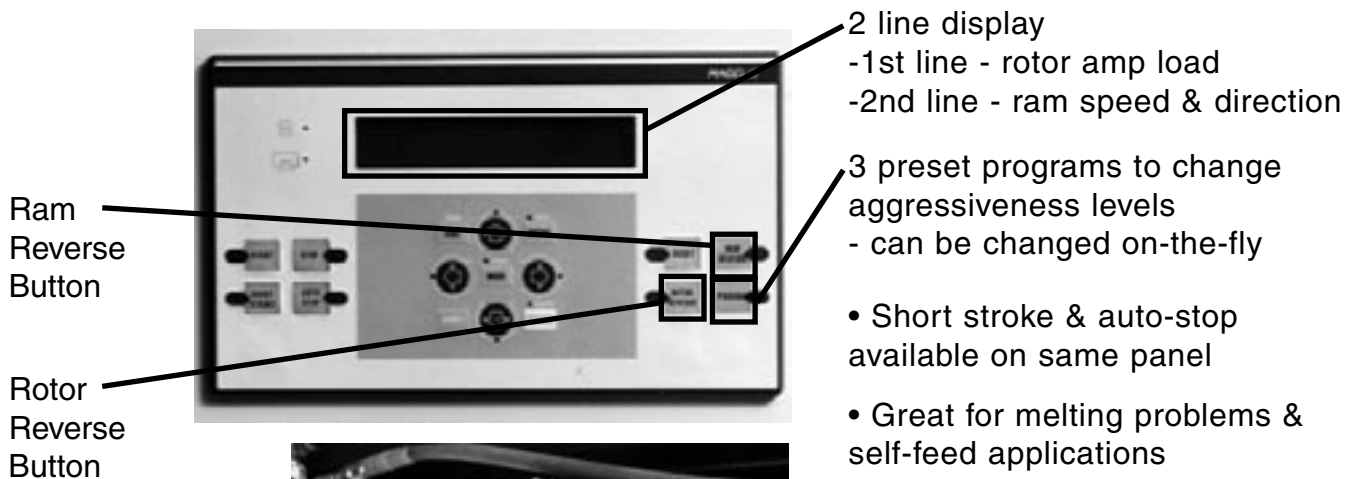
1. Check Rotor Rotation:

On the control panel, press the *Rotor Reverse* button. Visually inspect the direction that the rotor is turning. If the unit is wired correctly, the rotor will be turning **opposite** the normal cutting direction.

1. Check Hydraulic Motor:

On the control panel, press the *Ram Reverse* button. Visually inspect the direction that the hydraulic motor is turning. If wired correctly, the hydraulic motor will be turning in the direction of the arrow on the motor.

Panel Benefits



Display

Will also display any fault with machine

Main screen has all parts & service phone numbers

ReTech technician secure password to look for overtorque / overamp history