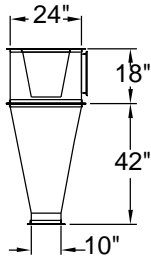
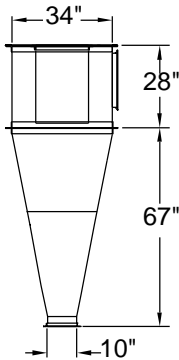


# Cyclones



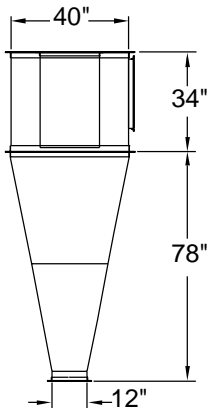
Model No.  
QC2000

CFM	
Min.	Max.
1000	2500



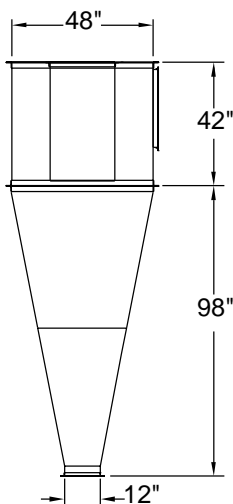
Model No.  
QC4000

CFM	
Min.	Max.
3000	4500



Model No.  
QC6000

CFM	
Min.	Max.
5000	6500



Model No.  
QC8000

CFM	
Min.	Max.
7000	8500

Vecoplan Cyclone dust collectors are used to remove particles from process air in the precleaning stage or final filter in product recovery or pollution control applications.

Vecoplan Cyclones range in size from 1000 CFM - 8500 CFM of air flow.

In proper applications High-Efficiency cyclones can capture > 90% of particles (by weight) > 5 microns.

The cyclones are designed with a pressure drop of 4"-8" of water column to create a high centrifugal force for high efficiency.

The cyclones are two piece flanged construction with a long, gradual cone. The cylinder section can be ordered with a tangential inlet (standard) or with an involute inlet for premium efficiencies.

The cyclones can be used on the positive or the negative side of the fan.

#### Heavy Duty Construction:

- Cyclones constructed of 12 Ga. steel for heavy and/or large particle loading.
- Color - machine gray.

#### Medium Duty Construction:

- Cyclones constructed of 16 Ga. steel for light and/or small particle loading.
- Color - machine gray.

#### Application Options:

- Involute Inlet cylinder for high efficiency separation.
- Clean-out door in the cyclone cone section.
- Clean air outlet volute for positive system cyclones.
- Cyclonic breaking hopper.
- Rotary valve for cyclone material discharge.
- Material discharge chute.
- Cyclone support stands.
- Dust storage barrel and loading assemblies.
- Structural steel frames for truck, dumpster, or gaylord box loading.

**Vecoplan, LLC**



