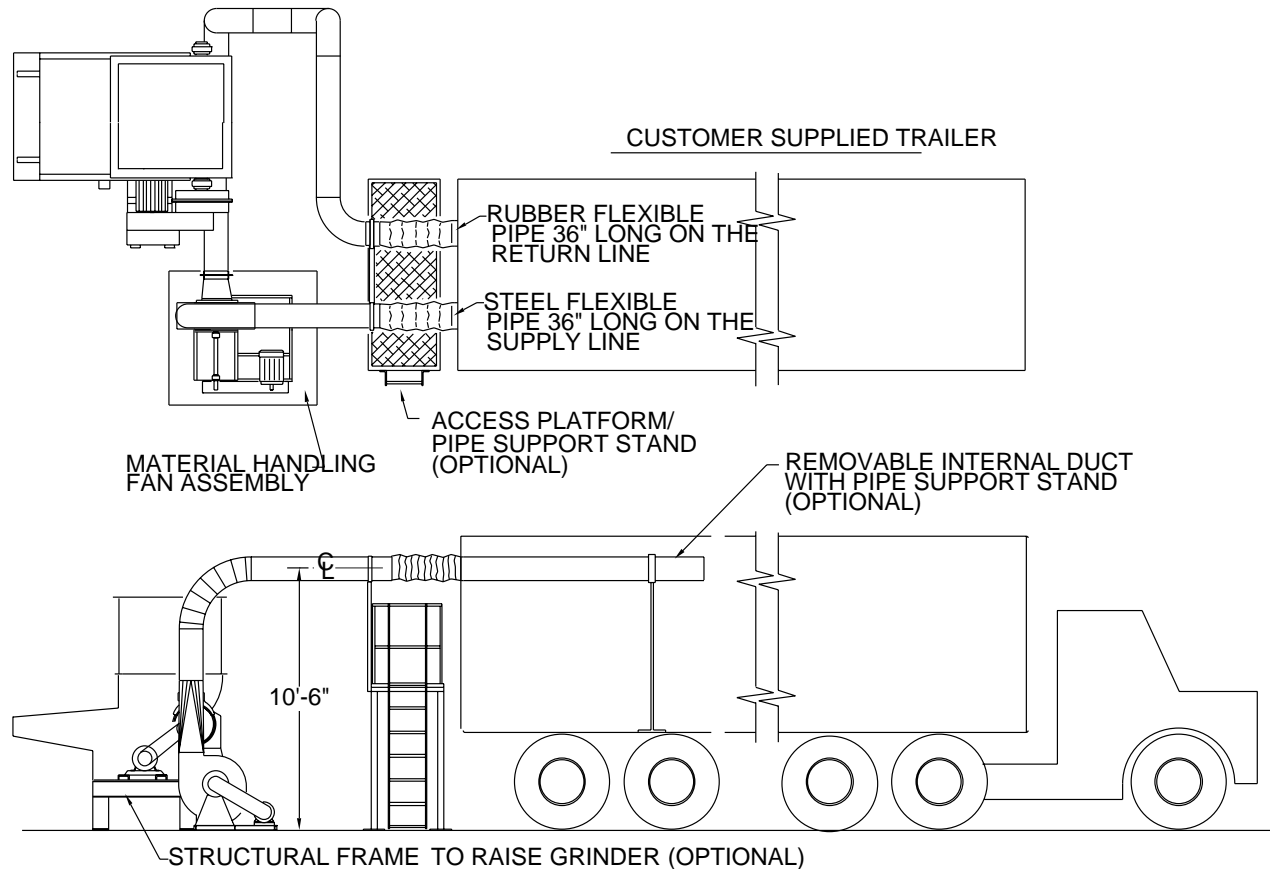


Closed Loop Truck Load System



'CLOSED LOOP' TRUCK LOAD SYSTEM

10 HP.- 25 HP. Material handling fan assemblies to blow the material (not recommended for 1" or larger chip size) into an enclosed trailer.

(Note: 'Closed Loop' truck load systems require a non-vented trailer, a return vent is required in the rear door of the trailer).

Heavy Duty Construction:

- Heavy duty constructed fans with 3/8" Thk. steel paddle wheels.
- Heavy duty fan shafts and greaseable bearings on fan.
- Fan and motor pre-mounted to C-Channel frame.
- Standard pulleys, bushings, and belts on the fan drive package.
- 10 HP.- 25 HP. 230/460V., 3PH. TEFC 1800 rpm standard frame motors.
- Enclosed belt guard.
- Color - machine gray fan base, beige fan with OSHA yellow belt guard.
- Heavy duty 20 ga. galvanized steel flanged ductwork.
- Heavy duty fully welded 18 ga. galvanized steel flanged elbows on the supply duct.
- Steel flexible pipe on the supply duct and rubber flexible pipe on the return duct for ease in connecting to the trailer.
- 2 HP. rotary valve at grinder discharge for balanced air flow.
- Clean-out door in the pneumatic drop below rotary valve.

Application Options:

- Access platform with ladder and pipe support stand.
- Removable internal duct with pipe support stand for front loading of the trailer.
- 8" structural steel frame to raise grinder.
- Self-cleaning or manual clean hump magnetic on the negative side of the fan.

Vecoplan, LLC

ReTech
Rotary Grinders

